

Ohio PROMISE



MIKE DEWINE
GOVERNOR OF OHIO



YOUR PRESENTER

Wendy Grove, Ph.D.

Senior Advisor, Research, Evaluation, & Impact
State Administrator, Ohio PROMISE
Ohio Department of Children and Youth

Seven years leading Birth – Age 3 programs
Nine years leading Early Education programs
Now, leading the REI activities

Former Preschool teacher, college professor, & middle school
tutor for children with disabilities





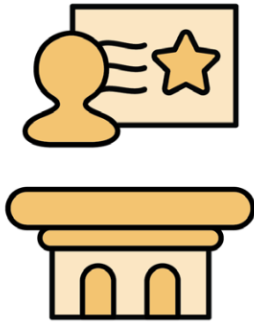
Ohio PROMISE is a statewide initiative that **p**romotes **r**esources, **o**pportunities, and **m**eaningful **i**nclusion through **s**upport and **e**ducation (PROMISE)

Investments of resources, expertise, and a robust infrastructure will move Ohio to **realize the vision** that each Ohioan, from birth, has a strong foundation of support, acceptance, and empowerment where they live, play, learn, and work

HOW WE GOT STARTED

- Ohio Governor DeWine asked state leaders to solve a problem families told him about regarding accessing child care
- Wrote an ECTA Intensive TA application & won!
- Leaders in state government/ organizations began meeting on 3/31/2020 to examine how Ohio was doing on indicators of [high-quality inclusion from ECTA](#)
- Created an Advisory Council to take what we did 2020 – 2022 and develop the programming components

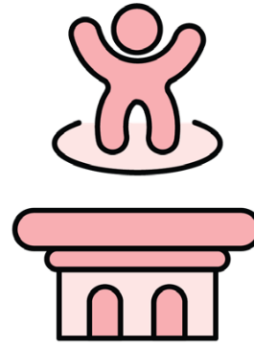
FIVE COMPONENTS OF OHIO PROMISE



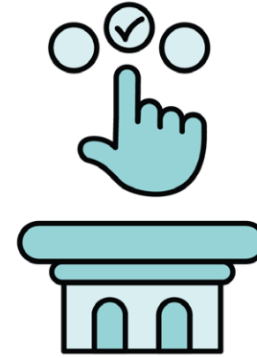
**Professional
Early Childhood
Inclusion
Credential**



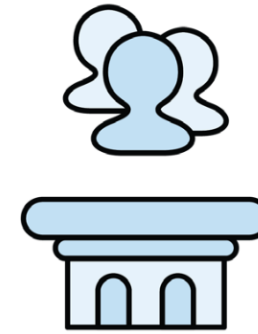
**Inclusive Child
Care Program
Designation**



**Early Childhood
Inclusion Center
of Excellence**



**Child Care
Choice
Voucher**



**Ohio PROMISE
Advisory
Council**

Programs

Professionals

Families

OHIO PROMISE ADVISORY COUNCIL

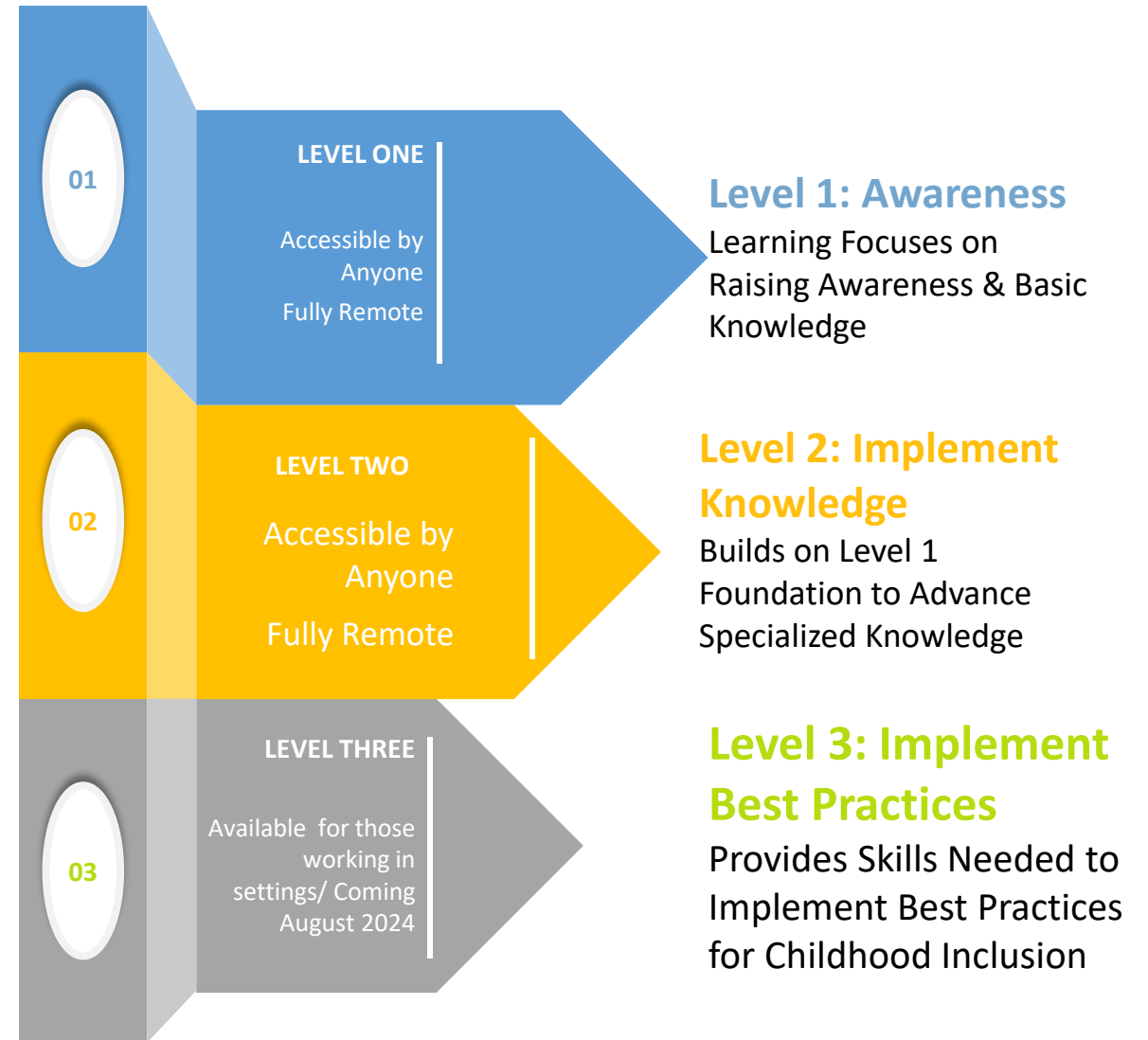
- Advisory Council comprised of state leaders, professionals and families
- Meet monthly to discuss all aspects of Ohio PROMISE
- Members provide input on future developments



Professional Early Childhood Inclusion Certificate (PECIC)

The Professional Early Childhood Inclusion Certificate is Specialized Learning at three-levels

- Aim is to raise awareness and build skills at the individual professional level
- Available on demand and at no cost
- Ohio Approved
- Linked to designation, potential incentives



PROFESSIONAL EARLY CHILDHOOD INCLUSION CERTIFICATE (PECIC)

Since August 2023: 3,580 Ohio Early Childhood professionals have completed the credential

Level 1: 2,895

Level 2: 530

Level 3: 155

*Note that these are unduplicated and everyone with a Level 1 completed Level 1 and everyone with a Level 3 completed Levels 1 & 2

INCLUSIVE CHILD CARE PROGRAM (ICCP) DESIGNATION

- PROGRAM-level designation
- Open to any licensed center, school, family child care home
- Requires *Administrator and one Lead Teacher* to complete PECIC or the Owner for Family Child Care Homes
 - Currently, just this one level of designation is available
 - At least one more level is in development
- Today, we have 1,001 programs achieving the designation

INCLUSIVE CHILD CARE PROGRAM (ICCP) DESIGNATION

Allows families to search for programs with the designation using Ohio's Child Care Search Page

Search for Early Care and Education Programs

Language Translation

This system will help you locate the type of early care and education program that meets your needs. You also can learn more about programs' licensing status, Step Up To Quality rating, and inspection results.

A comma-delimited (CSV) file listing all current programs is also available.

A map-based search of all programs, SUTQ rated and not, is also available.

County: ALL

City:

Zip Code:

Program Type: ALL

Step Up To Quality Rating: ALL

Program Name:

License Number:

Days/Hours of Operation:
Days/hours of operation may not include holidays, overnight or before/after school care. Select the days/times that best reflects your child care needs. For overnight care, you may use the "7PM to Midnight" option. For before/after school care, select the earliest time option that you need care. Please contact the child care provider to confirm availability and hours of operation.

☐ Monday

☐ Tuesday

☐ Wednesday

☐ Thursday

☐ Friday

☐ Saturday

☐ Sunday

☐ 6 AM to Noon

☐ Noon to 7 PM

☐ 7 PM to Midnight

☐ Midnight to 6 AM

Other Services Provided and Funding Sources:

☐ Meals

☐ Before School Care

☐ Publicly Funded Child Care

☐ Transportation

☐ After School Care

☐ Early Childhood Education Grant

☐ Field Trips

☐ Evening Care

☐ Head Start

☐ Liability Insurance

☐ Overnight Care

☐ Private Kindergarten

Accreditations:

☐ NAEYC

☐ NECPA

☐ NACCP

☐ NAFCC

☐ COA

☐ ACSI

☐ Cognia

Designations:

☐ Inclusive Child Care Program (ICCP)

Search

EARLY CHILDHOOD INCLUSION CENTER OF EXCELLENCE

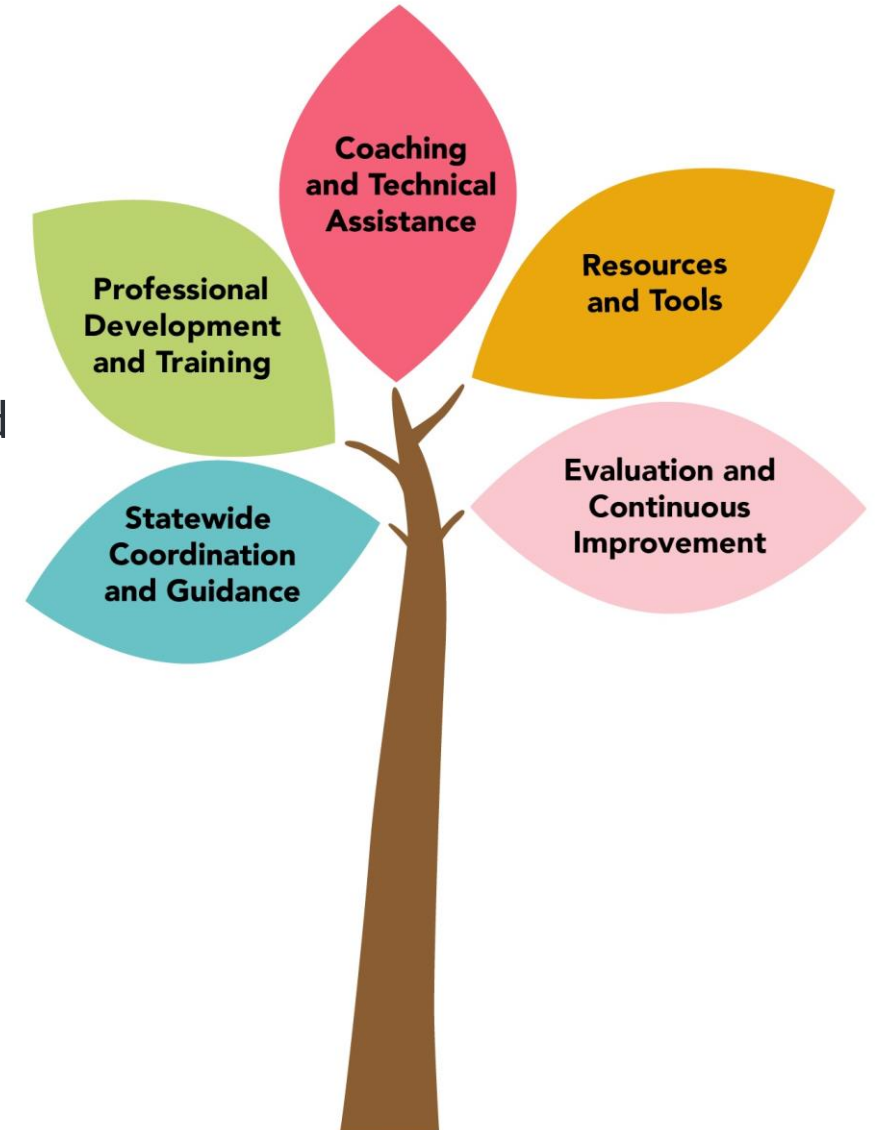


Ohio's Early Childhood Inclusion Source For:

- A.** **Childcare professionals and early childhood educators** who work with young children with disabilities
- B.** **Families** of young children with disabilities
- C.** **Local and state leaders** who work on behalf of young children with disabilities and their families

CENTER OF EXCELLENCE PRIORITIES

- ✦ Build sustainable infrastructure
- ✦ Translate research to practice.
- ✦ Develop ongoing guidance documents and innovative resources related to early childhood inclusion.
- ✦ Facilitate cross-agency collaboration and strengthen program and community capacity.
- ✦ Provide professional development, consultation & coaching.
- ✦ Curate and disseminate extensive collection of materials and resources.
- ✦ Ensure quality and fidelity of implementation of initiatives and practices.



EXAMPLES OF COE WORK



Monthly 30-minute webinars with practical strategies for all early childhood professionals



Quarterly newsletter with inclusion tips, strategies and information about resources and events

Program Level Quality Improvement: High-Quality Inclusion

Facilitated action planning and technical assistance based on indicators of high-quality inclusion at the early childhood program level:

- Inclusion Leadership Teams
- Shared Purpose
- Family Engagement & Partnerships
- Awareness & Commitment
- Policies & Procedures
- Fiscal Resources
- Program Supports for Professional Development
- Staff Policies & Structure
- Specialized Technical Assistance & Consultative Services
- Collaborative Teaming
- Curriculum
- Data Collection & Use

FAMILY SUPPORT – CHILD CARE CHOICE & SUBSIDY

- Voucher program that supports tuition costs
- Payments are determined by the child's age and child care type
- Family payments are recommended to be capped at 9%
- Families are eligible for 12 months once approved
- Families with children with disabilities can be eligible for double payment and come in at higher FPL



OHIO PROMISE

Each Ohioan, from birth, has a strong foundation of support, acceptance, and empowerment where they live, play, learn, and work



Questions?

Wendy.Grove@childrenandyouth.ohio.gov